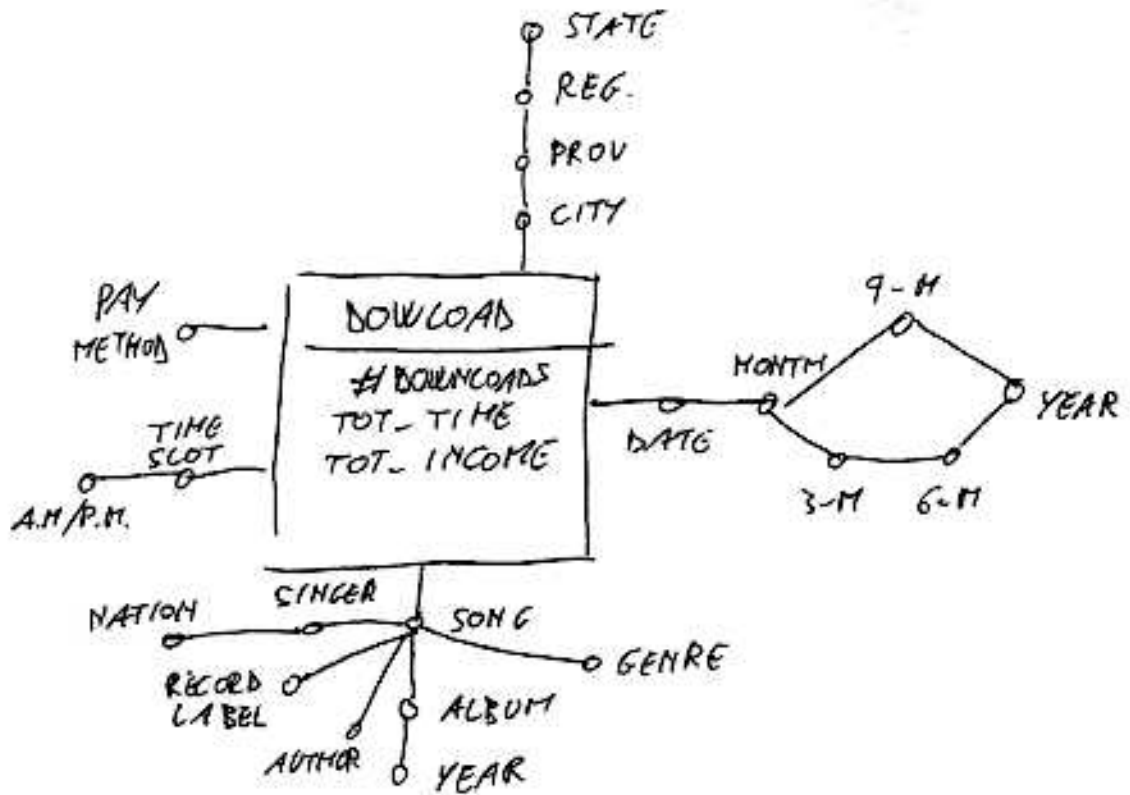




DW



QUERY A)

```
SELECT  ALBUM, SUM (#DOWNLOADS),  
        SUM (TOT-TIME) / SUM (#DOWNLOADS)  
FROM    DOWNLOADS D, TIME T, SONG S, CITY C  
WHERE   D.TID=T.TID AND D.SID=S.ID AND REGION = 'ABRUZZO'  
        AND TRIMESTER = '2 / 2010' AND D.CID=C.ID  
GROUP  BY ALBUM
```

QUERY B)

```
SELECT SONG, GENRE, MONTH, SUM (TOT_INCOME),  
SUM (TOT_INCOME) / COUNT (DISTINCT DATE),  
SUM (#DOWNLOADS) / COUNT (DISTINCT DATE),  
SUM (SUM (#DOWNLOADS)) OVER (  
PARTITION BY GENRE  
ORDER BY MONTH  
ROWS UNBOUNDED PRECEDING)
```

```
FROM DOWNLOAD D, TIME T, SONG S  
WHERE D.TID=T.TID AND D.SID=S.SID AND YEAR = 2011 AND  
NATIONALITY = 'ITALIAN'  
GROUP BY SONG, GENRE, MONTH;
```