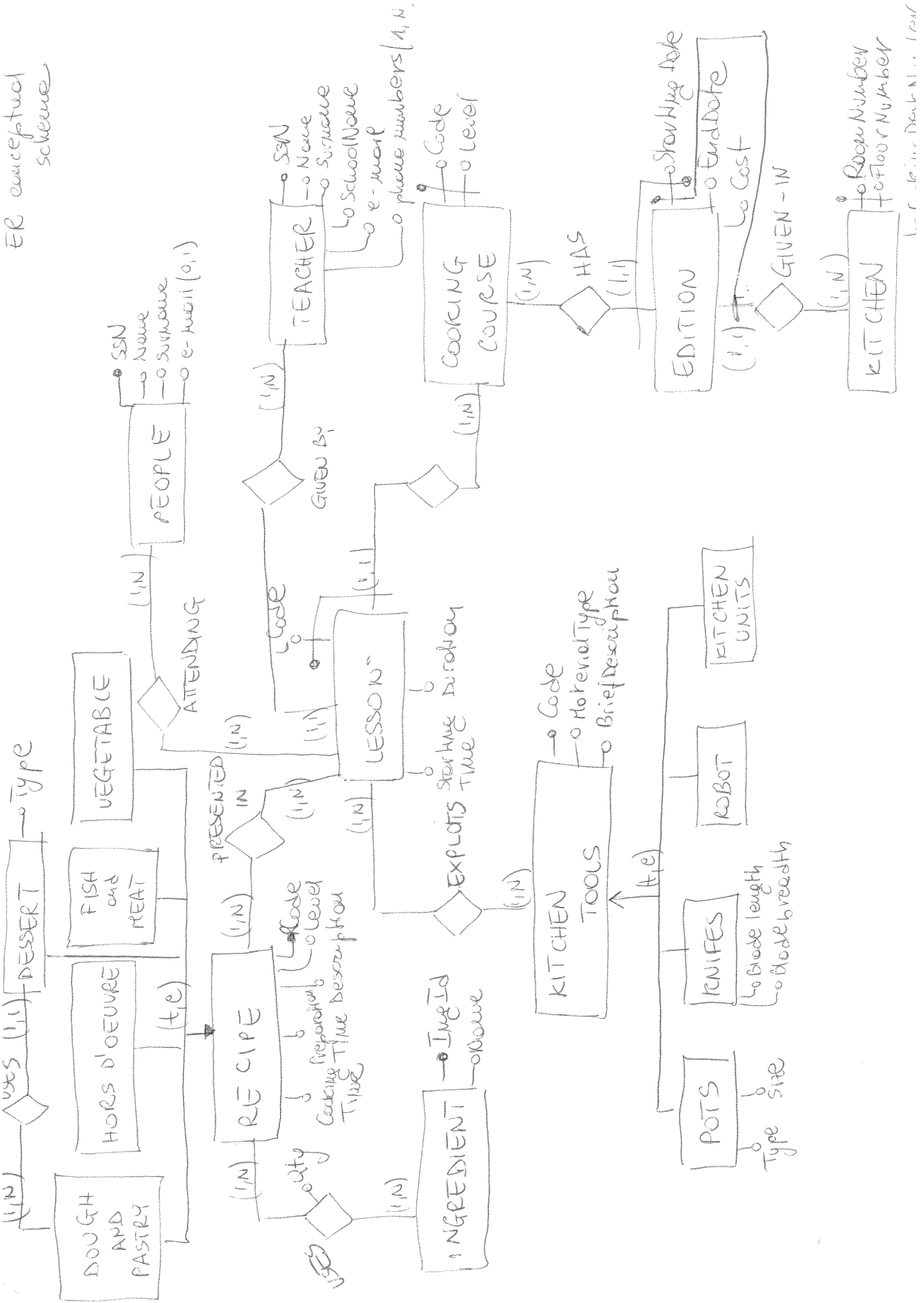


ER conceptual scheme



Logical Schema

KITCHEN-TOOLS (Code, MaterialType, BriefDescription, Type)

POTS (PCode, Type, Size)

KNIFES (PCode, Blade Length, Blade Breadth)

KITCHEN (RoomNumber, FloorNumber, CookingDeskNumber)

EDITION (CCCode, CCLevel, StartingDate, RoomNumber,
FloorNumber, EndDate, Cost)

COOKING-COURSE (CCCode, CCLevel)

LESSON (CCCode, CCLevel, LCode, StartingTime, Duration,
TeacherSSN)

TEACHER (SSN, Name, Surname, SchoolName, e-mail)

Phone Number (Phone#, TeacherSSN)

PEOPLE (SSN, Name, Surname, e-mail*)

PEOPLE-ATTENDING-LESSON (PeopleSSN, CCCode, CCLevel, LCode)

RECIPE (RCode, Level, Description, Preparation Time, CookingTime,
Type)

DESSERT (DRCode, Type, DPCode)

INGREDIENT (IngId, Name)

RECIPE-USES-INGREDIENT (RCode, IngId, Qty)

RECIPE-PRESENTED-IN-LESSON (RCode, CCCode, CCLevel, LCode)

LESSON-EXPLOITS-KITCHEN-TOOLS (CCCode, CCLevel, LCode,
KTCCode)

REFERENTIAL INTEGRITY CONSTRAINTS

1) In the CREATE TABLE LESSON

FOREIGN KEY (CCCode, CCLevel)

REFERENCES COOKING-COURSE (CCCode, CCLevel)

2) In the CREATE TABLE RECIPE-PRESENTED-IN-LESSON

FOREIGN KEY (RCode)

REFERENCES (RCode)
RECIPE

FOREIGN KEY (CCCode, CCLevel, LCode)

REFERENCES LESSON (CCCode, CCLevel, LCode)

3) In the CREATE TABLE EDITION

FOREIGN KEY (CCCode, CCLevel)

REFERENCES COOKING-COURSE (CCCode, CCLevel)

FOREIGN KEY (RoomNumber, FloorNumber)

REFERENCES KITCHEN (RoomNumber, FloorNumber)