

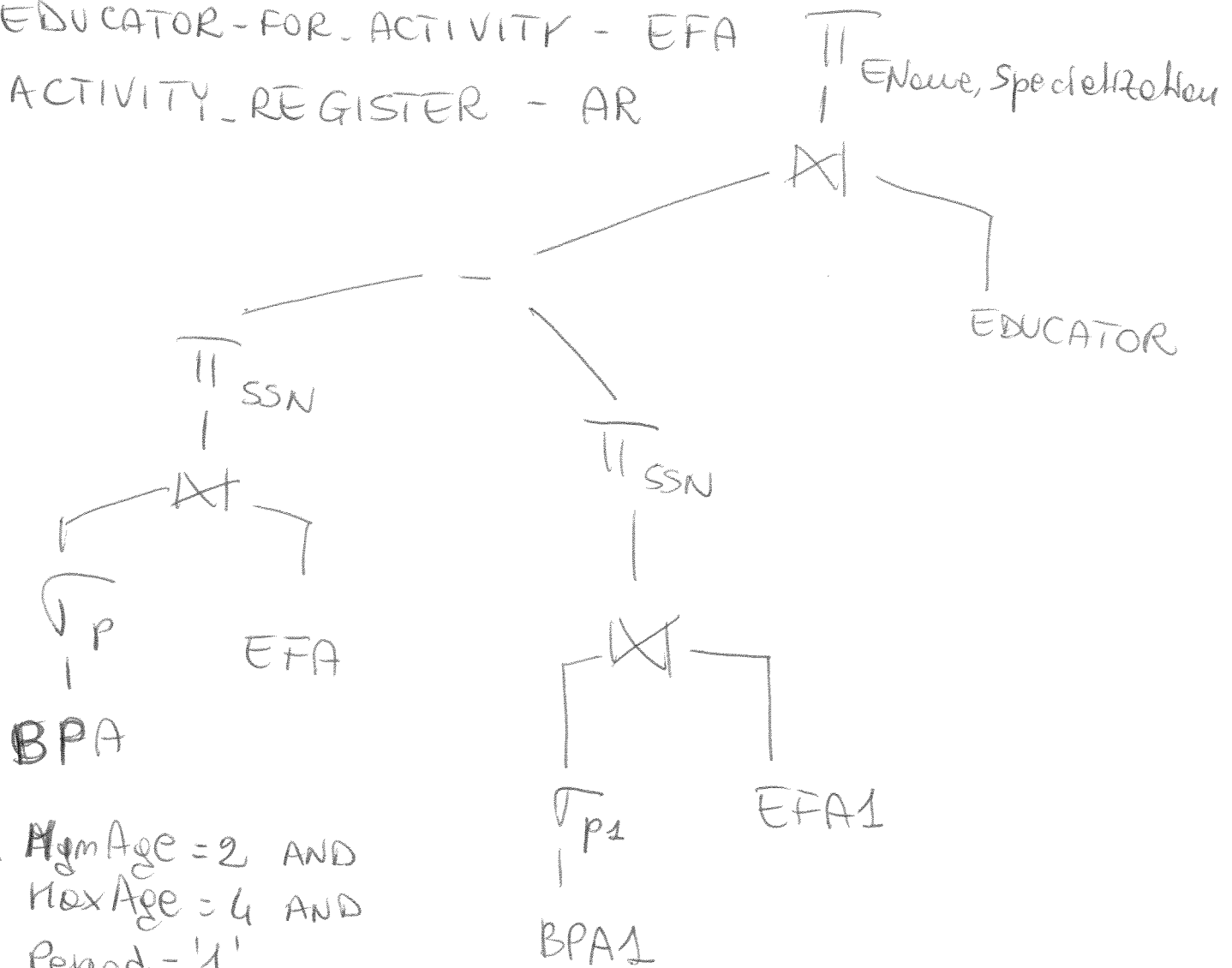
(c)

BABY-PARKING-ACTIVITY - BPA

EDUCATOR - E

EDUCATOR-FOR-ACTIVITY - EFA

ACTIVITY_REGISTER - AR



p: MinAge = 2 AND
 MaxAge = 4 AND
 Period = '1'

p₁: MinAge < 2 OR
 MaxAge < 4 OR
 Period < 1

(c) SELECT AName, TypeOfActivity

FROM BPA, EFA

WHERE BPA.ACode = EFA.ACode AND
MinAge = 1 AND MaxAge = 3

GROUP BY ACode, AName, TypeOfActivity

HAVING COUNT(*) > 3 AND

SUM(Total#EstimatedHours) < 30

(b) SELECT AName, EName, SUM(#Hours)

FROM BPA, E, AR

WHERE AR.ACode = BPA.ACode AND E.SSN = AR.SSN

AND AR.ACode IN (SELECT ACode

FROM AR1

GROUP BY ACode

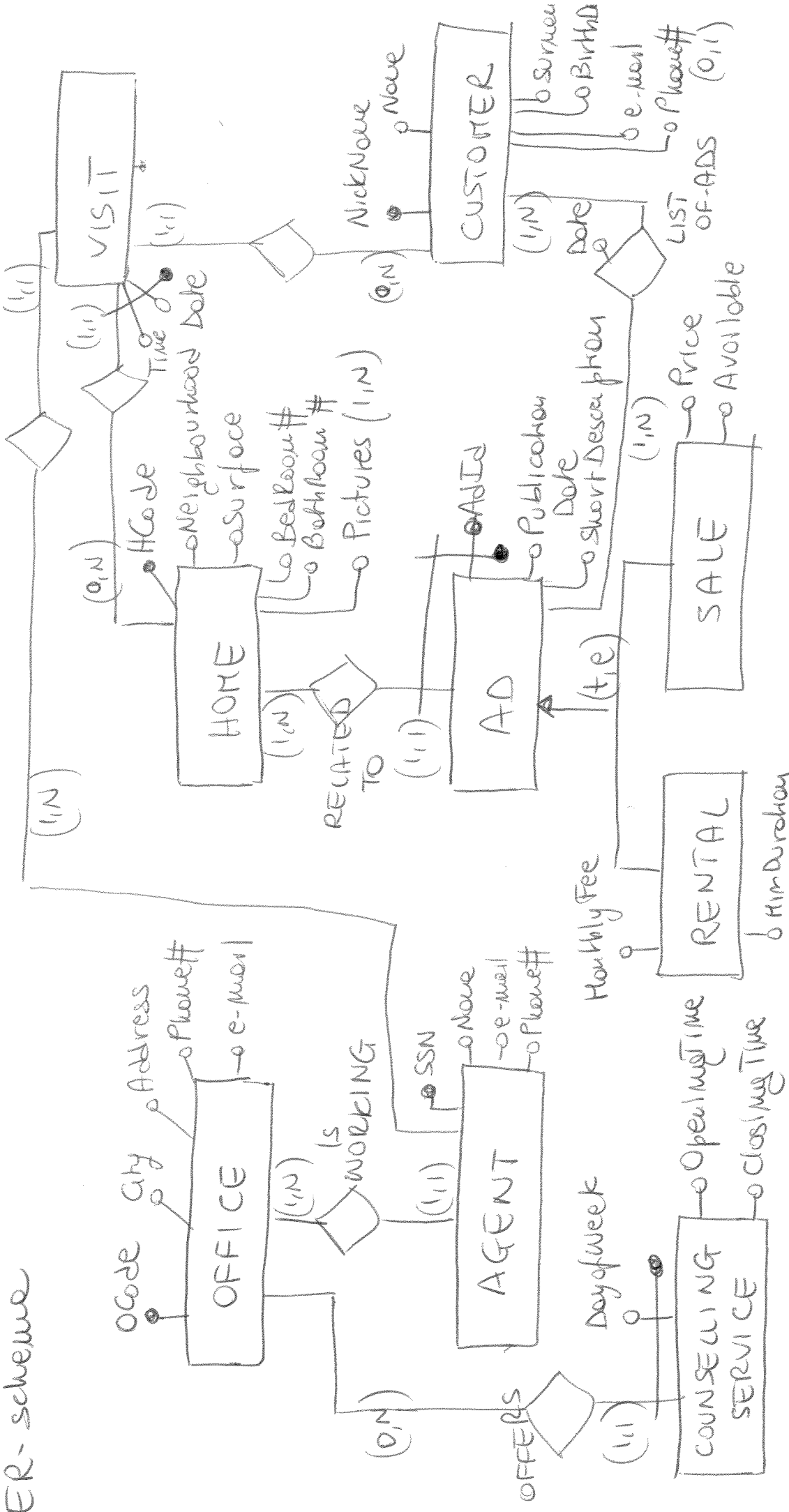
HAVING SUM(#Hours) ≥

(SELECT SUM(Total#EstimatedHours
FROM EFA

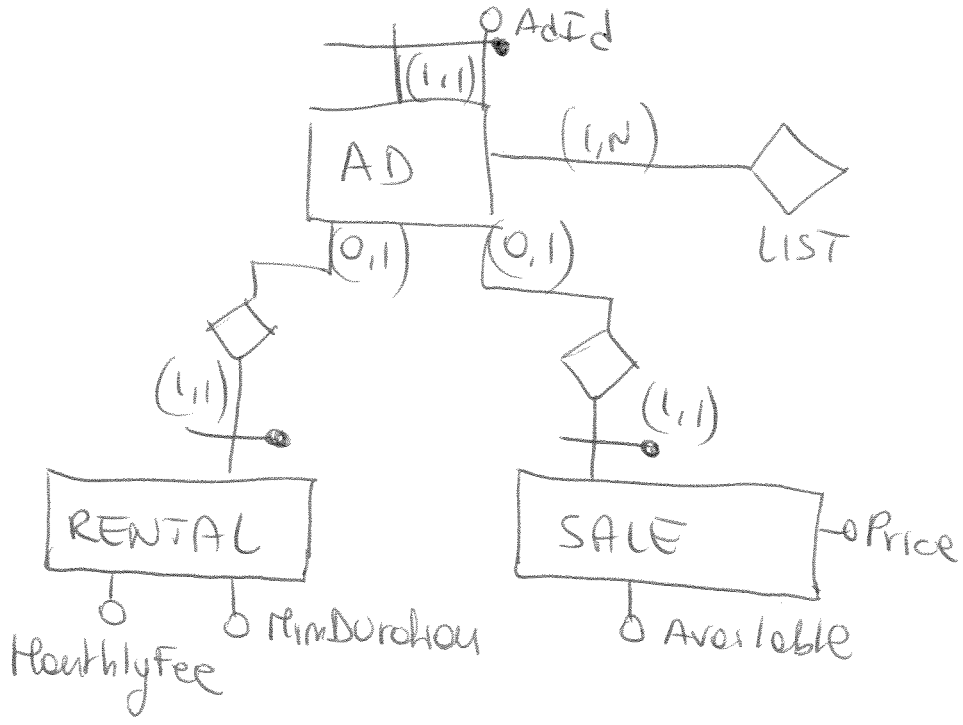
WHERE AR1.ACode =
EFA.ACode)

GROUP BY AR.ACode, AName, EName, E.SSN

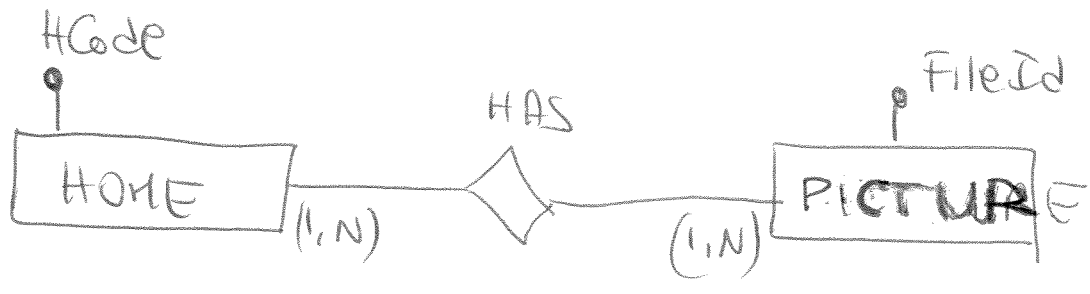
ER-scheme



REMOVING GENERALIZATION



REMOVING MULTI-VALUE ATTRIBUTE



LOGICAL - SCHEMA

OFFICE (OCode, City, Address, Phone#, e-mail)

AGENT (SSN, Name, e-mail, Phone#, OCode)

COUNSELLING-SERVICE (OCode, Day of Week, Opening Time, Closing Time)

HOME (HCode, Neighbourhood, Surface, BedRoom#, BathRoom#)

AD (AdID, HCode, Publication Date, ShortDescription)

HOME-HAS-PICTURE (HCode, PictureCode)

~~PICTURE (FileID)~~

VISIT (HCode, Date, Time, NickNameCustomer, AgentSSN)

CUSTOMER (NickName, Surname, BirthDate, e-mail, Phone#*)

LIST-OF-ADS (NickNameCustomer, AdID, Date, HCode)

RENTAL (AdID, HCode, Monthly Fee, Min Duration)

SALE (AdID, HCode, Price, Available)

REFERENTIAL INTEGRITY CONSTRAINT

1) In the CREATE TABLE AGENT

FOREIGN KEY (OCode)

REFERENCES OFFICE (OCode)

2) In the CREATE TABLE AD

FOREIGN KEY (HCode)

REFERENCES HOME (HCode)

3) In the CREATE TABLE LIST-OF-ADS

FOREIGN KEY NickName Customer

REFERENCES CUSTOMER (NickName)

FOREIGN KEY (AdID, HCode)

REFERENCES AD (AdID, HCode)