

Databases

Practice #3 - Oracle SQLPLUS

This practice comprises two parts. Part I proposes some more queries on an existing database, to be solved using the SQL language. In Part II, you are requested to write the SQL scripts for creating and populating a database, whose logical schema is provided.

PART I

Purpose

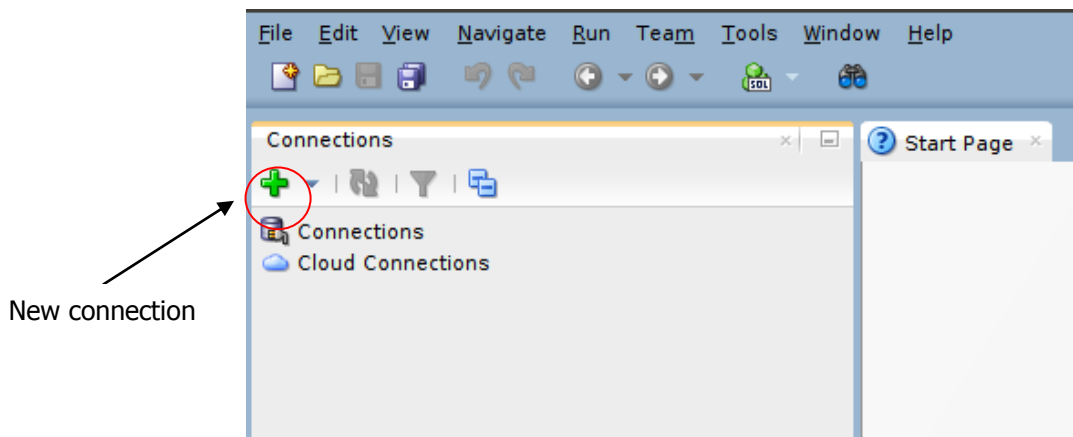
Write some SQL queries on an Oracle database.

Connection to the Oracle database

The SQL queries are executed through the SQL Developer software.

1) Connection to the database

- Launch Oracle SQL Developer
- Click on New connection



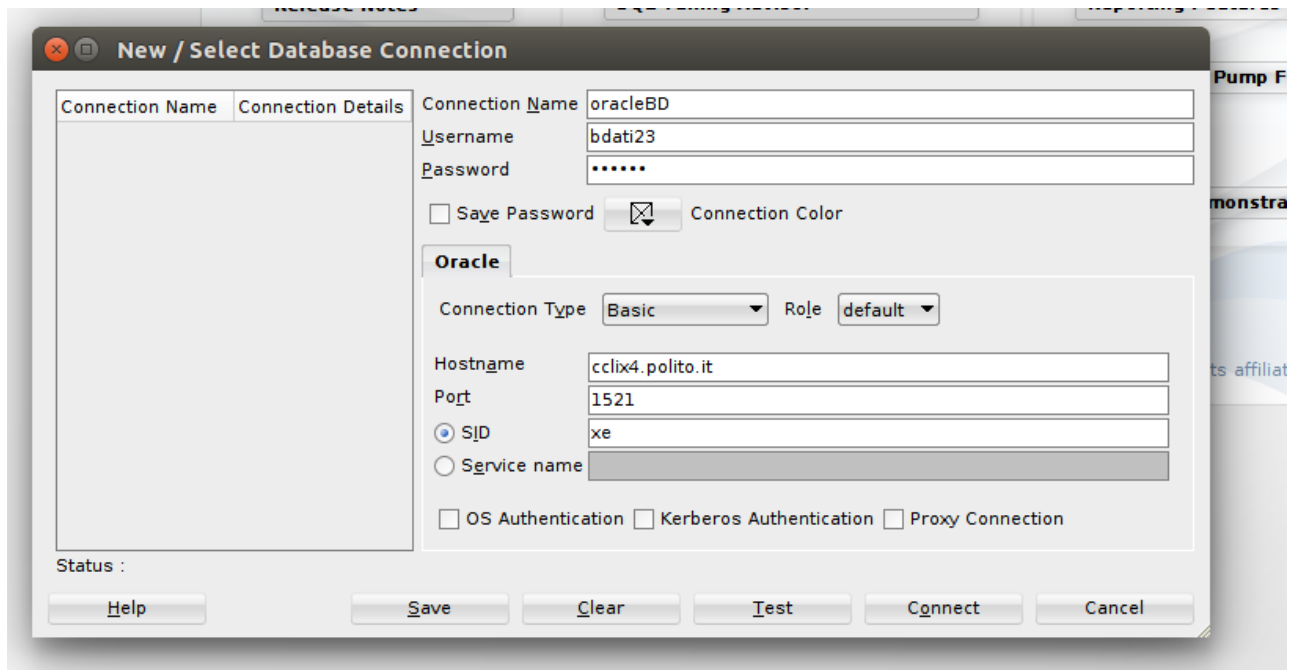
2) Login

To logon, you have to insert the following parameters:

- Connection name: oracleBD
- Username: bdatiXY
 - XY are the last two digits of the PC number you are using
- Password: oracXY
 - XY are the last two digits of the PC number you are using
- Hostname: cclix4.polito.it
- Port: 1521
- SID: xe

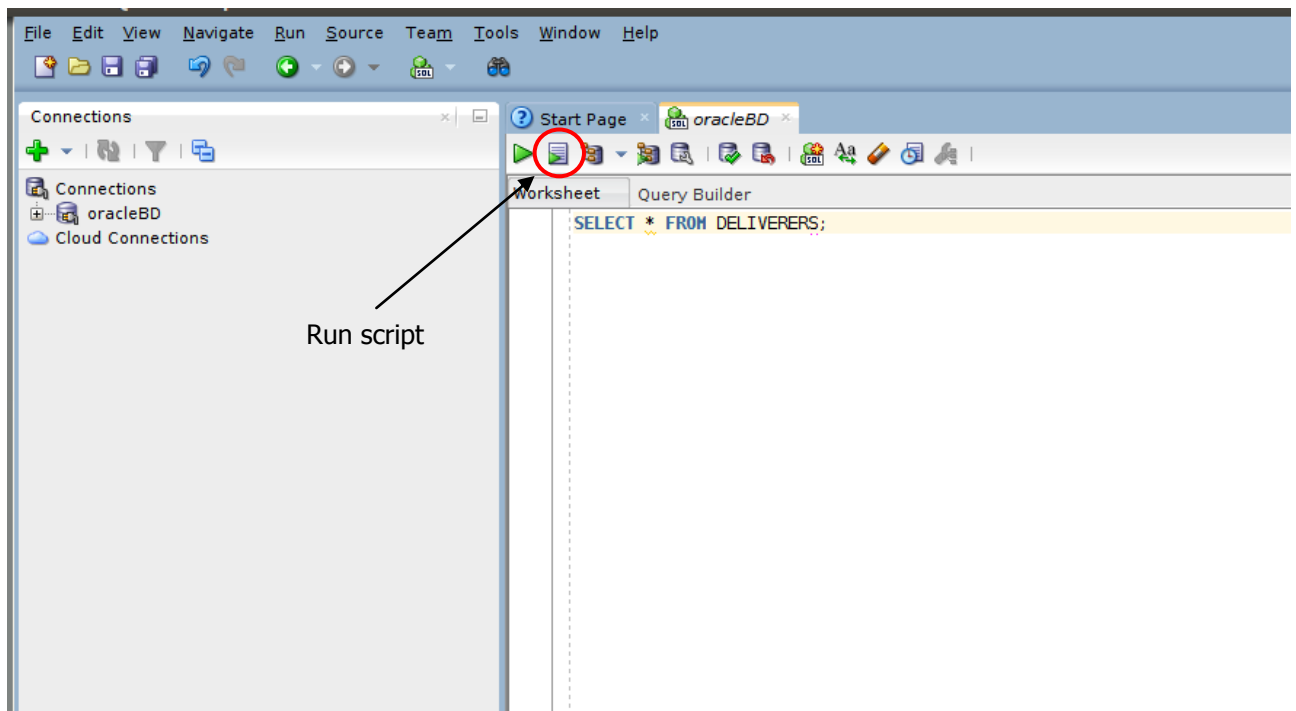
For example, if you are working on pc number 23, the corresponding username is bdati23 and the password is orac23.

N.B.: if you are working on pc numbers [01, ..., 09], DON'T use the "0" in the usernames/passwords: user=[bdati1, ..., bdati9] and pass=[orac1, ..., orac9].



Write and execute SQL queries

Write the SQL query in the Worksheet and execute it by clicking on the “Run script” button.



2. Description of the *Delivery* database

The Delivery database gathers information about the activities of a firm delivering and collecting goods for various customer companies.

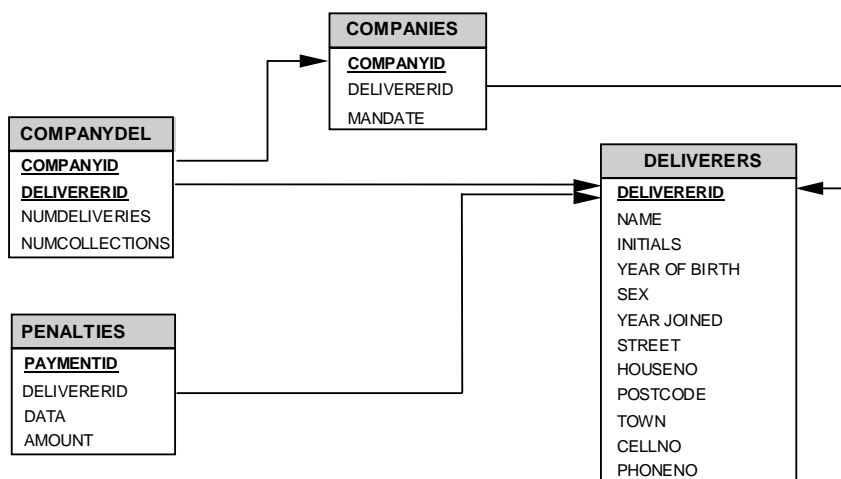
The DELIVERERS table contains the personal data for the deliverers working at the firm. For each deliverer, the following information is available: identification code (DELIVERERID), last name, first name initials, year of birth, sex, year when she/he began working for the firm, street, house number, city, residence postal code, cellular phone number, and office phone number.

The COMPANIES table reports, for each customer company, the company identification code (CompanyID) and the identification code of the deliverer who is the company's current reference person. In addition, it reports the number of times (MANDATE) the deliverer held this position.

The COMPANYDEL table reports the total number of good deliveries (NUMDELIVERIES) and collections (NUMCOLLECTIONS) made by each deliverer for each customer company. Note that the table only reports the deliverer-company pairs such that the deliverer performed at least one delivery or collection for the company.

The PENALTIES table reports the fines received by each deliverer. For each fine, the fine code (PENALTYID), the deliverer code, the fine date, and amount to be paid are stored.

The database schema is shown in the subsequent figure. Next Section 2 reports the table instance.



3. Table instance for the *Delivery* database

The primary key is underlined. Optional attributes are denoted with *.

DELIVERERS table

<u>DELIVERERID</u>	NAME	INITIALS	YEAR_OF_BIRTH	SEX	YEAR JOINED	STREET	HOUSENO	POSTCODE	TOWN	CELLNO	PHONENO*
2	Everett	R	1948	M	1975	Stoney Road	43	3575NH	Stratford	070-237893	2411
6	Parmenter	R	1964	M	1977	Haseltine Lane	80	1234KK	Stratford	070-476537	8467
7	Wise	GWS	1963	M	1981	Edgecombe Way	39	9758VB	Stratford	070-347689	NULL
8	Newcastle	B	1962	F	1980	Station Road	4	6584WO	Inglewood	070-476573	2983
27	Collins	DD	1964	F	1983	Long Drive	804	8457DK	Eltham	079-234857	2513
28	Collins	C	1963	F	1983	Old main Road	10	1294QK	Midhurst	010-659599	NULL
39	Bishop	D	1956	M	1980	Eaton Square	78	9629CD	Stratford	070-393435	NULL
44	Baker	E	1963	M	1980	Lewis Street	23	4444LJ	Inglewood	070-368753	1124
57	Brown	M	1971	M	1985	Edgecombe Way	16	4377CB	Stratford	070-473458	6409
83	Hope	PK	1956	M	1982	Magdalene Road	16a	1812UP	Stratford	070-353548	1608
95	Miller	P	1934	M	1972	High Street	33a	5746OP	Douglas	070-867564	NULL
100	Parmenter	P	1963	M	1979	Haseltine Lane	80	1234KK	Stratford	070-476537	6524
104	Moorman	D	1970	F	1984	Stout Street	65	9437AO	Eltham	079-987571	7060
112	Bailey	IP	1963	F	1984	Vixen Road	8	6392LK	Plymouth	010-54874	1319

COMPANYDEL table

<u>COMPANYID</u>	<u>DELIVERERID</u>	NUMDELIVERIES	NUMCOLLECTIONS
1	2	4	8
1	6	9	1
1	8	0	1
1	44	7	5
1	57	5	0
1	83	3	3
2	8	4	4
2	27	11	2
2	104	8	4
2	112	4	8

Tabella **PENALTIES**

<u>PAYMENTID</u>	<u>DELIVERERID</u>	DATA	AMOUNT
1	6	12/08/1980	100
2	44	05/05/1981	75
3	27	10/09/1983	100
4	104	08/12/1984	50
5	44	08/12/1980	25
6	8	08/12/1980	25
7	44	30/12/1982	30
8	27	12/11/1984	75

COMPANIES table

<u>COMPANYID</u>	<u>DELIVERERID</u>	MANDATE
1	6	first
2	27	second

3. Queries

1. Find the identification codes of the deliverers who have delivered (or collected) parcels to (from) *all* of the firms in which deliverer no. 57 has delivered or collected parcels.
2. For each deliverer that has been fined, find the identification code, the date of the last fine he/she received and the amount of this fine.

PART II

Purpose

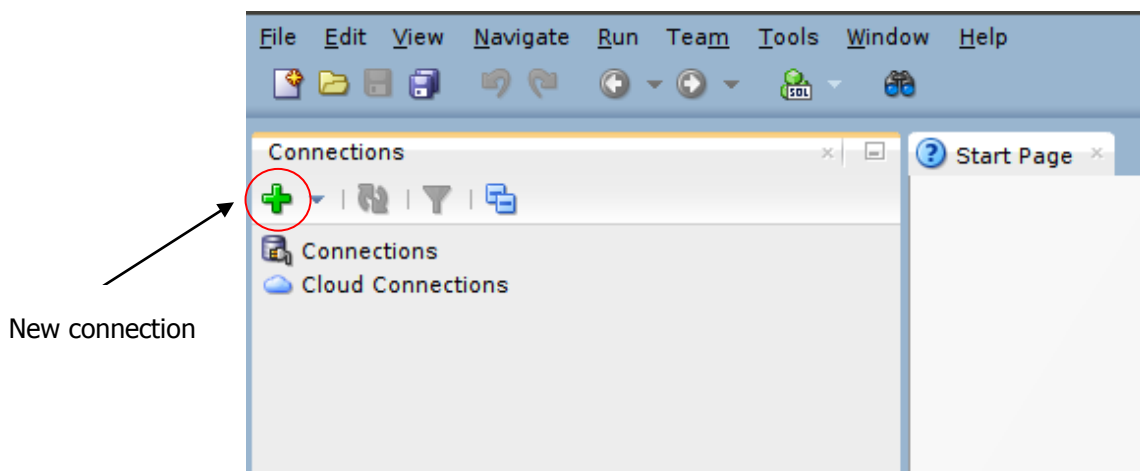
The purpose of this part is to write the scripts for creating and populating a database, given the logical schema, and to execute update and delete commands on this database, using the SQL language.

Connection to the Oracle database

The SQL queries are executed through the SQL Developer software.

3) Connection to the database

- Launch Oracle SQL Developer
- Click on New connection

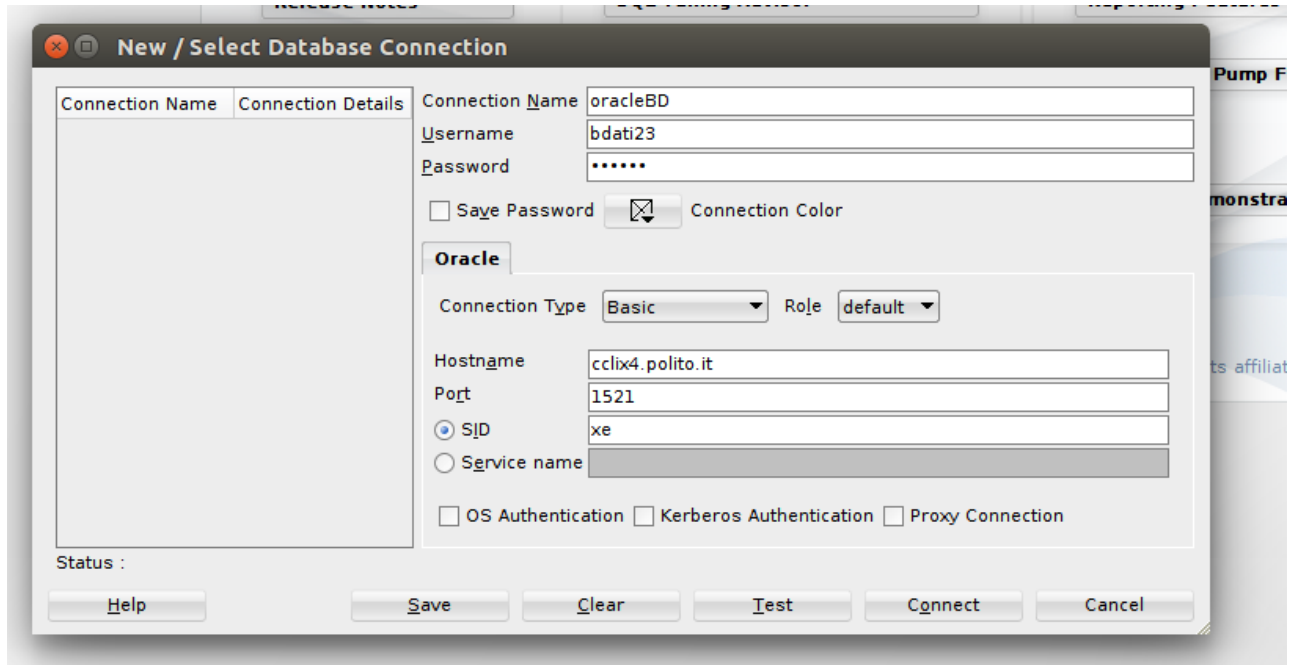


4) Login

To logon, you have to insert the following parameters:

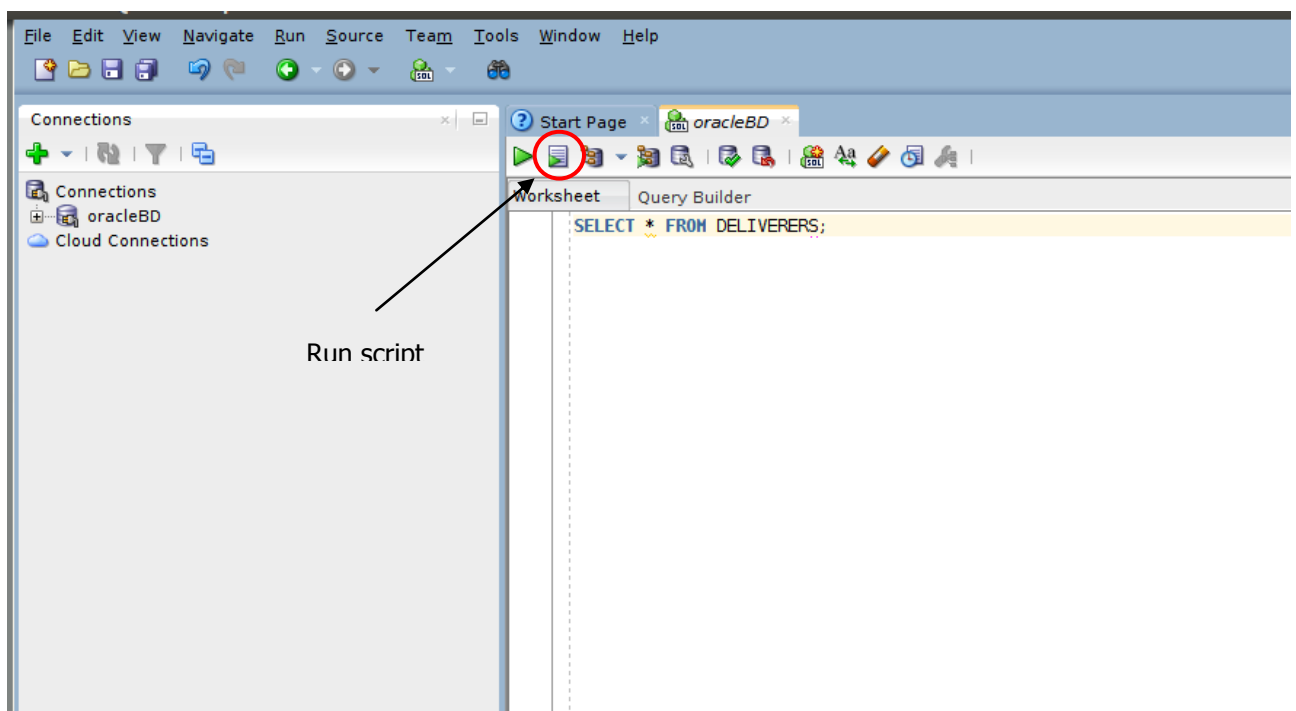
- Connection name: oracleBD
- Username: bdatiXY
 - XY are the last two digits of the PC number you are using
- Password: oracXY
 - XY are the last two digits of the PC number you are using
- Hostname: cclix4.polito.it
- Port: 1521
- SID: xe

For example, if you are working on pc number 23, the corresponding username is bdati15 and the password is orac23.



Write and execute SQL scripts

Write the script (set of SQL commands) in the Worksheet and execute it by clicking on the “Run script” button. Scripts can be loaded by using the open button.



1. Description of the *Gym* database

The database you should implement is about the activities in a gym. It is described by the following logical schema (primary keys are underlined, foreign keys are in italic, and optional attributes are denoted with *):

TRAINER (SSN, Name, Surname, DateOfBirth, Email, PhoneNo*)

COURSE (CId, Name, Type, Level)

SCHEDULE (SSN, Day, StartTime, Duration, *CId*, GymRoom)

For each trainer, the Social Security Number (SSN), the name, the surname, the date of birth, the email address, and the phone number (if any) are known. For each course, the code, the name, the type, and the level (1-4) are known. The course schedule lists the day of the week and the start time for each lesson of a given course taught by each trainer, together with the duration of the lesson (in minutes) and the gym room in which it is held.

TRAINER table

<u>SSN</u>	Name	Surname	DateOfBirth	Email	PhoneNo
SMTPLA80N31B791Z	Paul	Smith	31/12/1980	p.smith@gym.it	NULL
KHNJHN81E30C455Y	John	Johnson	30/5/1981	j.johnson@gym.it	+2300110303444
AAAGGG83E30C445A	Peter	Johnson	30/5/1981	p.johnson@gym.it	+2300110303444

COURSE table

<u>CId</u>	Name	Type	Level
CT100	Spinning for beginners	Spinning	1
CT101	Fitdancing	Music activity	2
CT104	Advanced spinning	Spinning	4

SCHEDULE table

<u>SSN</u>	<u>Day</u>	<u>StartTime</u>	Duration	<i>CId</i>	GymRoom
SMTPLA80N31B791Z	Monday	10:00	45	CT100	R1
SMTPLA80N31B791Z	Tuesday	11:00	45	CT100	R1
SMTPLA80N31B791Z	Tuesday	15:00	45	CT100	R2
KHNJHN81E30C455Y	Monday	10:00	30	CT101	R2
KHNJHN81E30C455Y	Monday	11:30	30	CT104	R2
KHNJHN81E30C455Y	Wednesday	9:00	60	CT104	R1

Figure 1. Contents that the *Gym* database should include after executing the SQL script designed in this practice.

2. Scripts

1. Write an SQL script (*createDB.sql*) with the commands (i.e., CREATE TABLE) for creating the database corresponding to the logical schema described in Section 1.

In particular:

- Define the three tables, choosing the most appropriate data type for each of the attributes. Pay special attention to the definition of primary keys and referential integrity constraints.
- Specify the domain and/or tuple constraints you deem appropriate.
Note. In Oracle, domain constraints must be defined at the end of the CREATE TABLE statement, by using the following syntax:

```
CONSTRAINT constraint_name CHECK (constraint)
```

Example. Consider a table with a field named Grade. To bind the Grade attribute in range [0,30], the following domain constraint should be appended to the definition of the table including the Grade attribute:
CONSTRAINT grade_constraint CHECK (Grade>=0 AND Grade<=30)

- Choose the most appropriate constraint management policy in each context.

Note. Oracle cannot handle the ON UPDATE CASCADE and ON UPDATE SET NULL policies. The only policy applied by Oracle to update operations is ON UPDATE NO ACTION (which is also the default policy). Thus, you needn't specify any policy for update operations. You should, however, specify a policy to handle delete operations, choosing among ON DELETE CASCADE, ON DELETE NO ACTION and ON DELETE SET NULL.

Note. Do pay attention to the order in which tables are created. Referenced tables should appear first in the script, while referencing tables must appear after the table(s) they reference.

2. Write an SQL script (*populateDB.sql*) containing the INSERT commands for populating the database created in the previous point. The script should include the insert commands required to obtain an instance of the database containing the same data shown in the tables in Figure 1.

Note. The order in which the insert commands are executed *does* matter. Make sure you follow the correct order so as not to violate the referential integrity constraints.

3. Test your *createDB.sql* and *populateDB.sql* scripts by executing them through the Oracle Web interface (navigate to **Home** -> **SQL** -> **SQL scripts**).

Note. The tables might already exist in the database if some other student has already created them using the same account. In this case, you should execute the following commands to delete them, prior to executing your own scripts:

- DROP TABLE SCHEDULE;
- DROP TABLE COURSE;
- DROP TABLE TRAINER;