

Pentaho

Introduzione

Luigi Grimaudo

Dipartimento di Automatica e Informatica

Telefono: 011-090-7084

e-mail: luigi.grimaudo@polito.it

url: <http://www.luigigrimaudo.it>



Pentaho - Introduzione

- Tra i leader nei software Open Source per la Business Intelligence
- Disponibile come:
 - Versione Community (Open Source)
 - Versione Enterprise (Commerciale)
- Funzionalità:
 - Data Integration
 - ETL
 - Olap
 - Reporting
 - Dashboarding
 - Data Mining



Pentaho Suite

- Pentaho Business Intelligence Suite si presenta come un insieme di applicativi Java
- Due server principali accessibili come Web Application:
 - BI Administration Console: gestione utenti, ruoli, connessioni a database, ecc.
 - BI User Console: analisi olap, dashboarding, repository, deploying, e molto altro
- Numerose applicazioni client standalone:
 - Sviluppo in locale
 - Pubblicazione remota sulla BI User Console



Pentaho Suite - CE

- Open Source Community Edition:
 - <http://community.pentaho.com/>
 - Tomcat come Application Server
 - HSQLDB come database di default
- Possibile integrazione con altri DBMS (Oracle, Mysql, Sql Server, ecc.)
- Struttura della nostra **custom** suite:

- **Pentaho**
 - **servers**
 - administration-console
 - biserver-ce
 - **clients**
 - schema-workbench
 - report-designer



Pentaho BI User Console

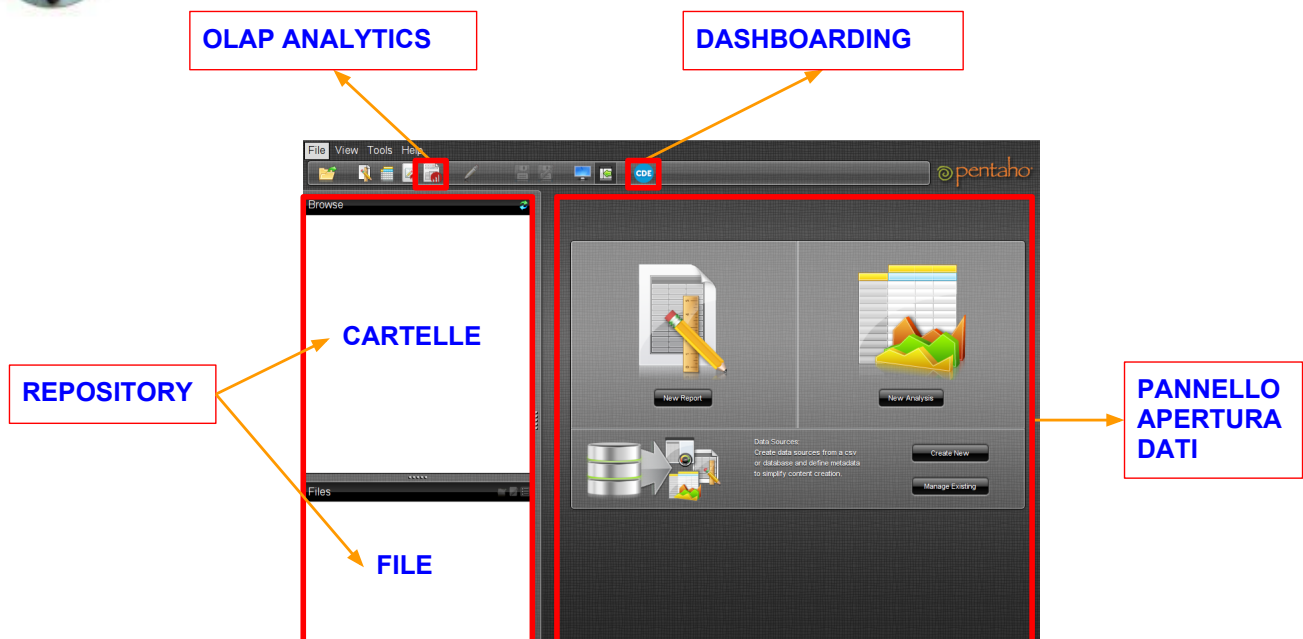
- Avvio:
 - Directory: **Pentaho/servers/biserver-ce**
 - Doppio click: **start-pentaho.bat**
- Connessione:
 - Puntare il browser alla pagina: **http://localhost:8090**
- Login:
 - Utente campione:
 - User: **joe**
 - Password: **password**
- Chiusura:
 - Doppio click: **stop-pentaho.bat**



Pentaho - Introduzione - Luigi Grimaudo



Pentaho BI User Console



Pentaho - Introduzione - Luigi Grimaudo



Pentaho BI Administration Console

- Avvio:
 - Directory: **Pentaho/servers/administration-console**
 - Doppio click: **start-pac.bat**
- Connessione:
 - Puntare il browser alla pagina: **http://localhost:8099**
- Login:
 - Utente admin:
 - User: **admin**
 - Password: **password**
- Chiusura:
 - Doppio click: **stop-pac.bat**



Pentaho - Introduzione - Luigi Grimaudo



Pentaho BI Administration Console

PENTAHO SERVICE STATUS

ADMIN
PANEL

Server Status: [Server Status icon]

Home
Administration

Welcome

Upgrade to Pentaho BI Suite Enterprise Edition
Pentaho's Enterprise Edition offerings provide the combination of software and services that enable organizations to achieve success with Pentaho's open source business intelligence technology.

Professional Support and Product Expertise
Accelerate the development of your BI solution and avoid lengthy disruptions in your production deployments through direct access to the Pentaho experts. Pentaho goes well beyond traditional technical support by providing remote assistance, consultative support, knowledgebase access and more.

Certified Software and Software Maintenance
Deploy in production with confidence using certified, stabilized, and optimized releases of Pentaho's best-in-class open source BI capabilities. Get faster defect resolution through patch releases that are delivered to Enterprise Edition customers well in advance of Community Edition releases.

Pentaho Enterprise Console
Streamline deployment and simplify administration and maintenance with enhanced functionality including configuration utilities, application diagnostics, performance monitoring, audit reporting, and repository backup/restore capabilities.

[Learn More](#)



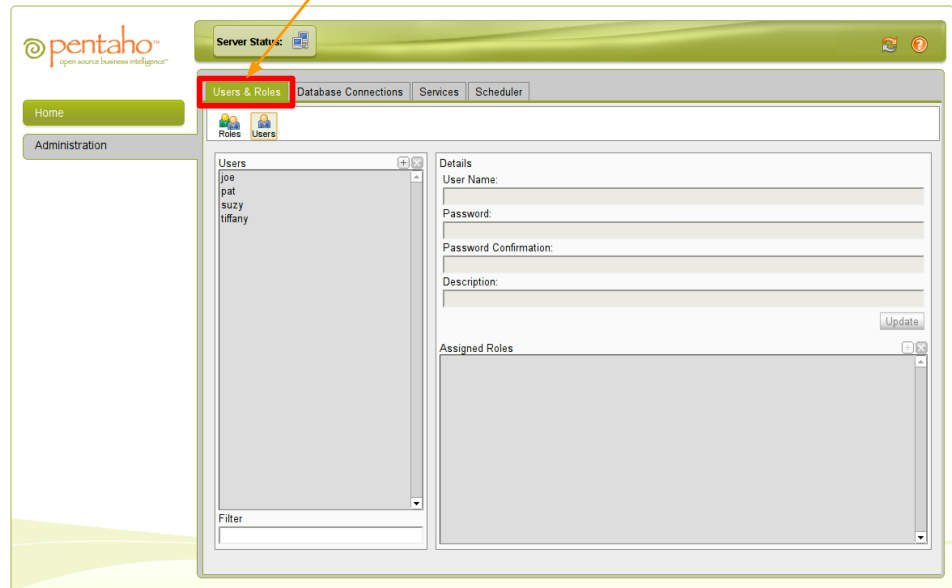
Pentaho - Introduzione - Luigi Grimaudo



Pentaho BI Administration Console

USERS AND ROLES TAB

- Creazione e gestione **Utenti**
- Creazione e gestione **Ruoli**



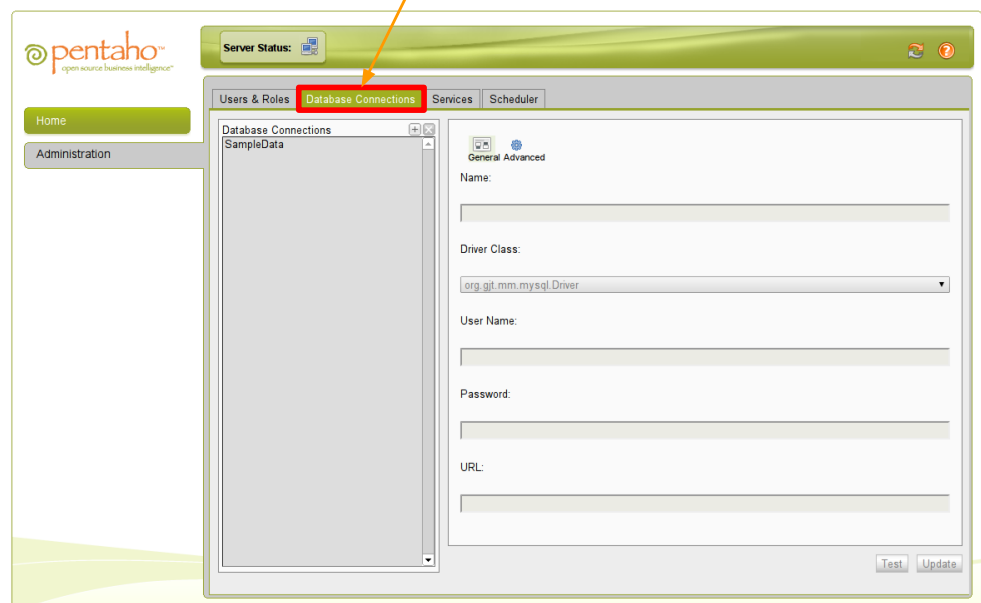
Pentaho - Introduzione - Luigi Grimaudo



Pentaho BI Administration Console

DATABASE CONNECTIONS TAB

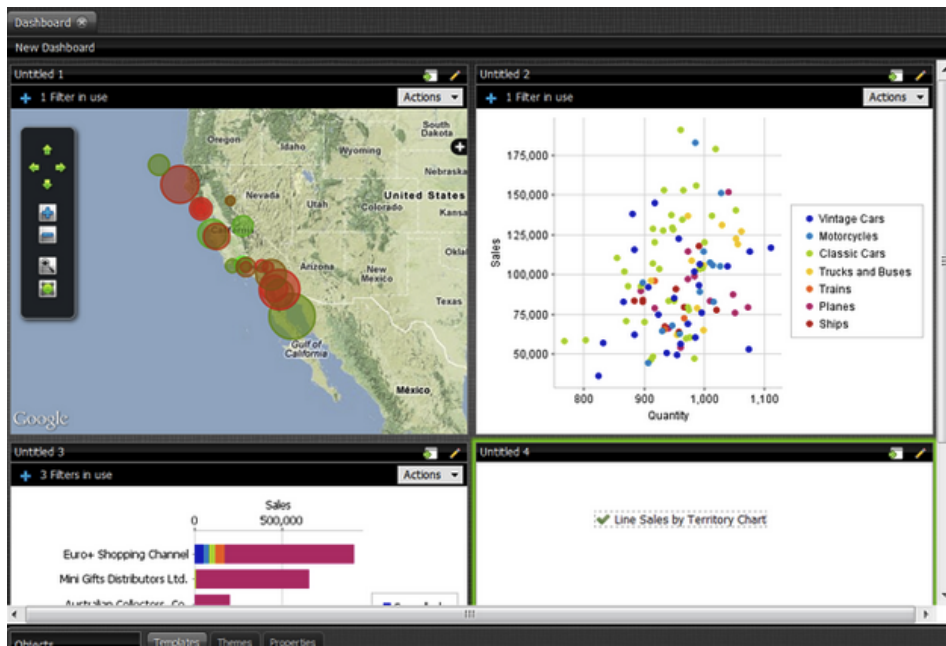
- Creazione, gestione e testing delle connessioni alle **sorgenti dati**
- Le connessioni create vengono automaticamente pubblicate come sorgenti dati **ndi**, accessibili nella BI user console e nelle varie applicazioni client



Pentaho - Introduzione - Luigi Grimaudo



Pentaho - Esempi



Dashboard

