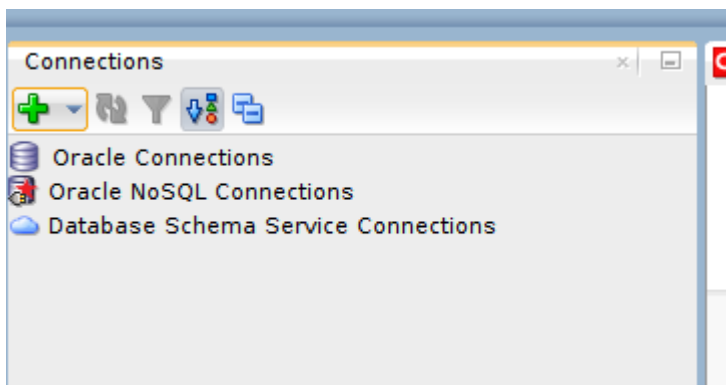


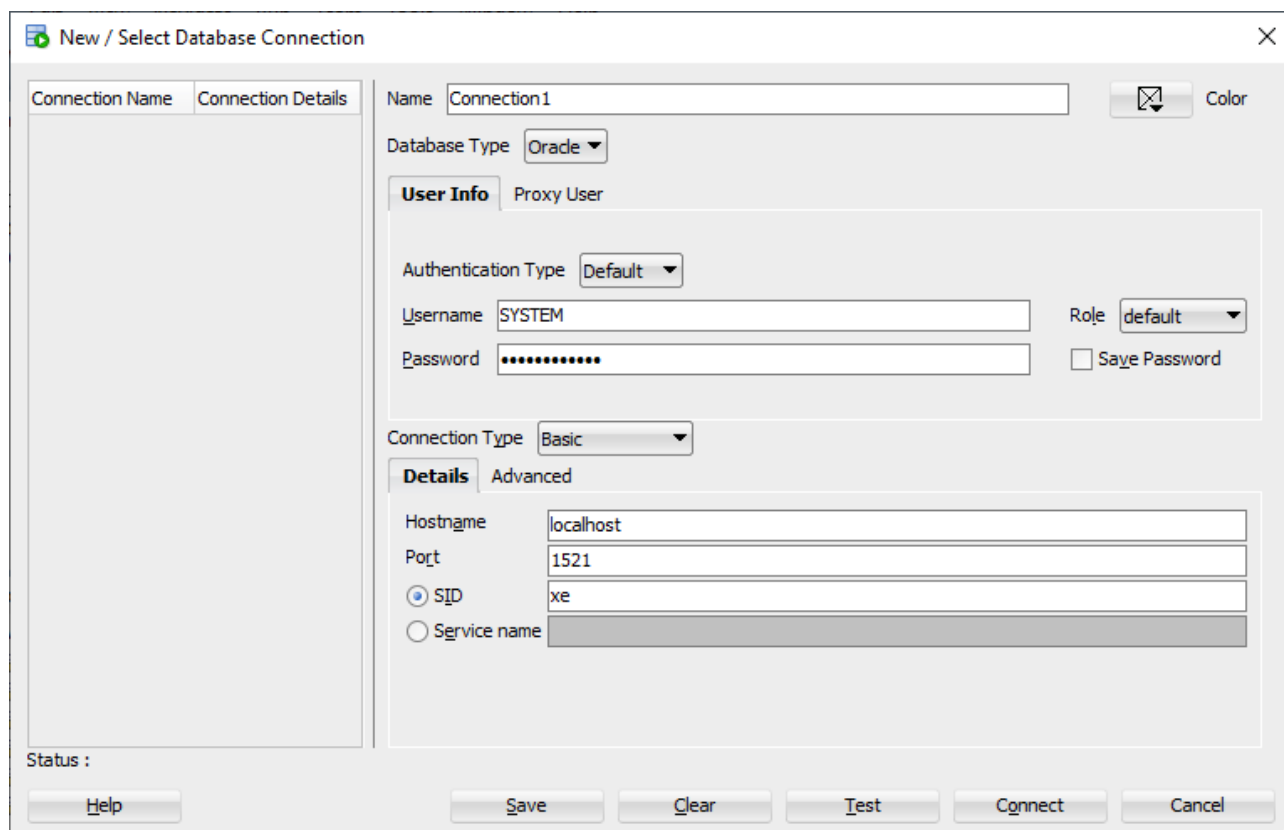
IMPORT DATABASE WITH ORACLE SQL DEVELOPER

How to connect on database

Create a new connection at Oracle database



Use user SYSTEM and the password you specified (during the Oracle Database Express Edition installation or with the docker run command). Use a (connection) name you prefer.

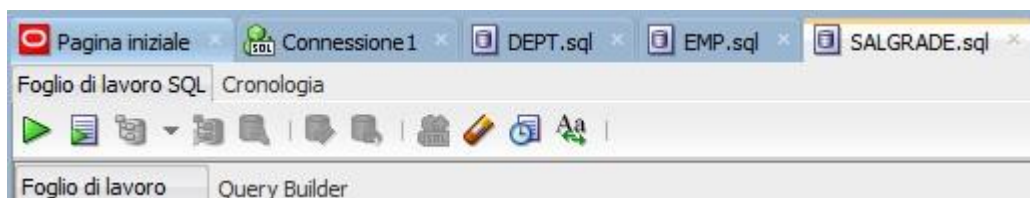


How to import database (using SQL script)

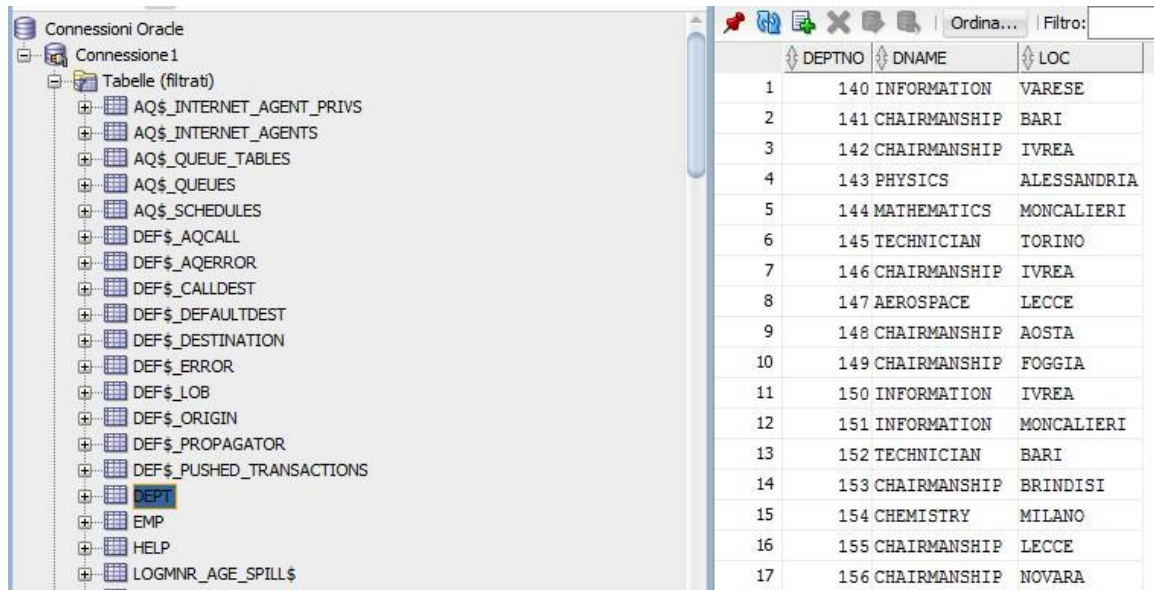
To solve some exercise is needed to import databases available on course's page.

Download database and extract zip files.

Open SQL files with SQL Developer and execute them on application.



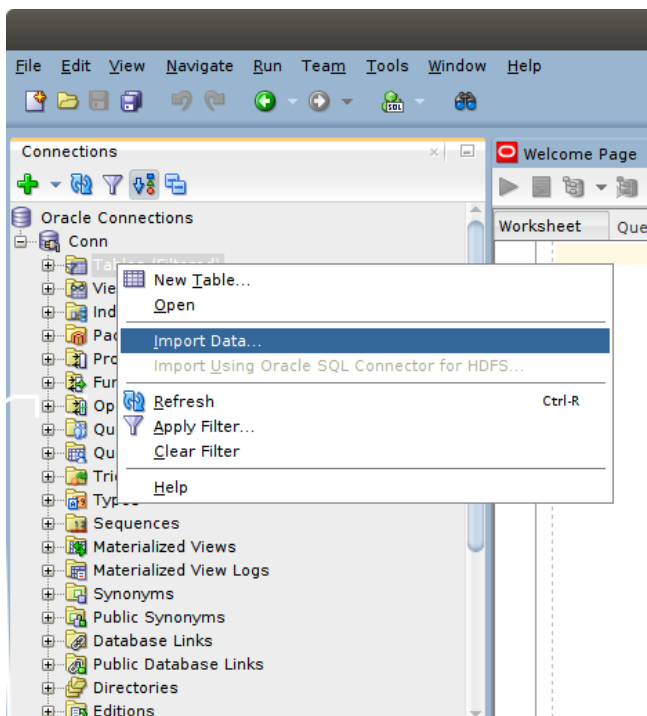
After this task, Database are generated. On left side you can see all tables.



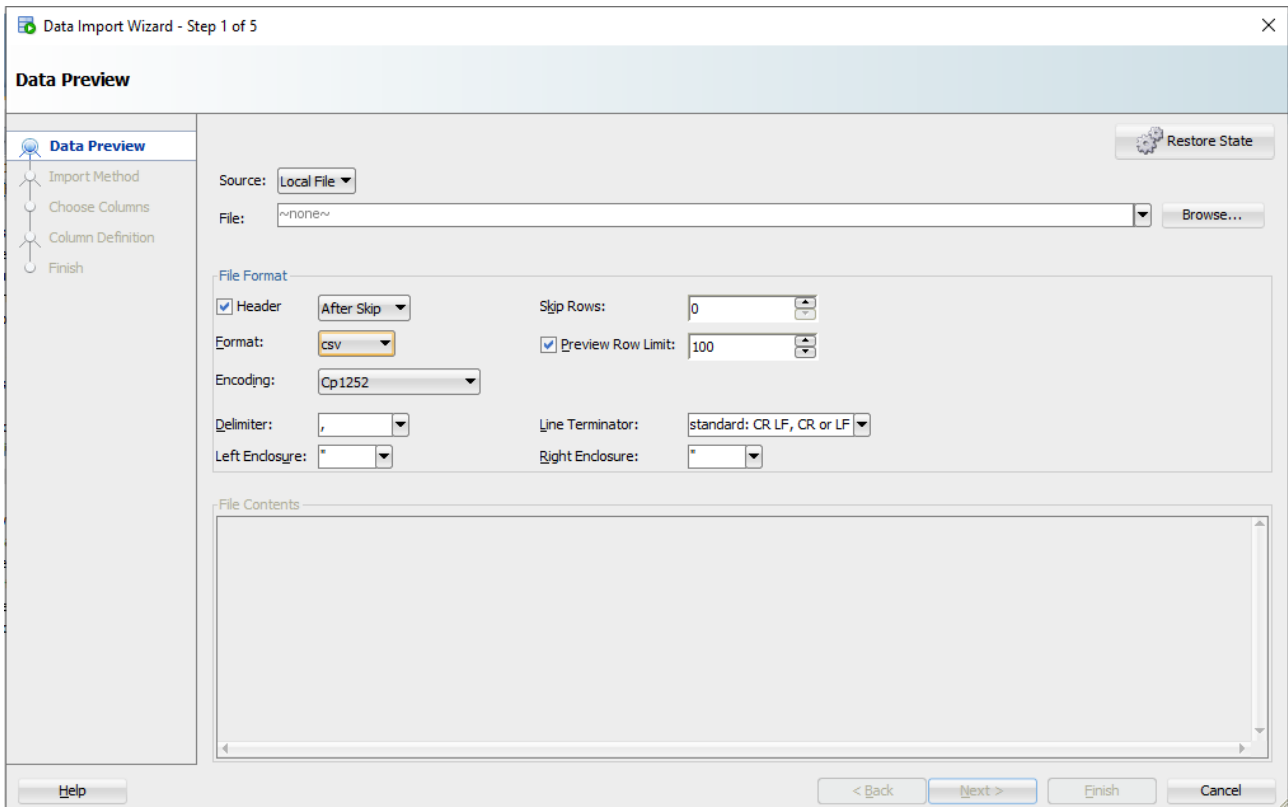
How to import database (CSV file)

If Database is on csv format, we need to import data as follows.

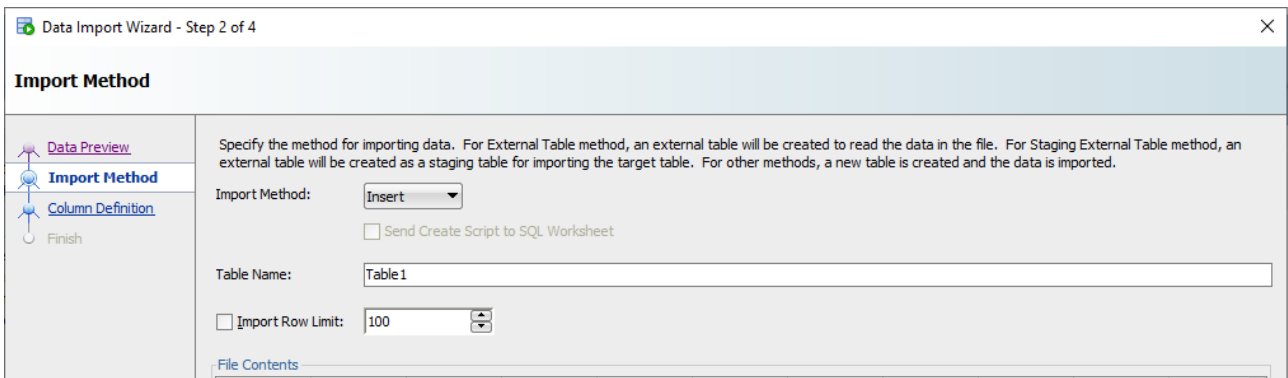
Right click on Tables → Import Data



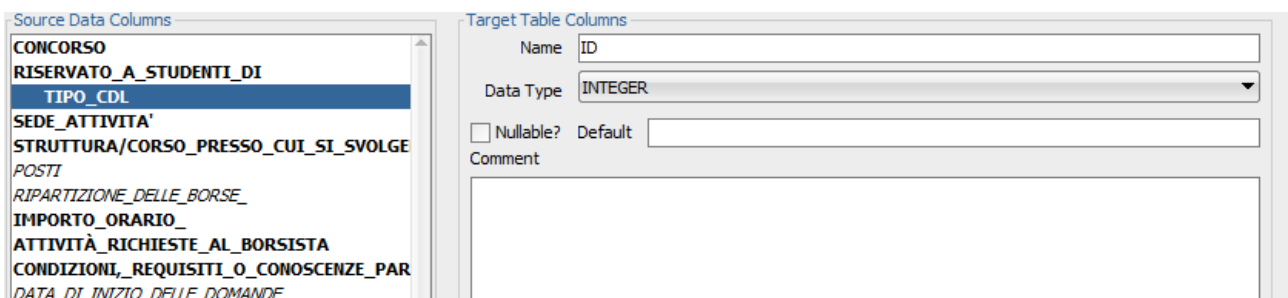
Follow Wizard instructions to setup. Set Format with "csv" and insert csv file path.



Click on next and set table's name.



Click next and import all attributes. Pay attention on KEY attributes, you have to set the type = INTEGER and must be NOT NULLABLE.



Click to End.